

An Evaluation of the Boss Buck Feeder vs All Seasons Feeder



**BOSS
BUCK™**

Non-Typical

"Now You're Gettin' Serious"

Dr. Deer's Whitetail World, LLC 2016



The Making of the Perfect Deer Feeder

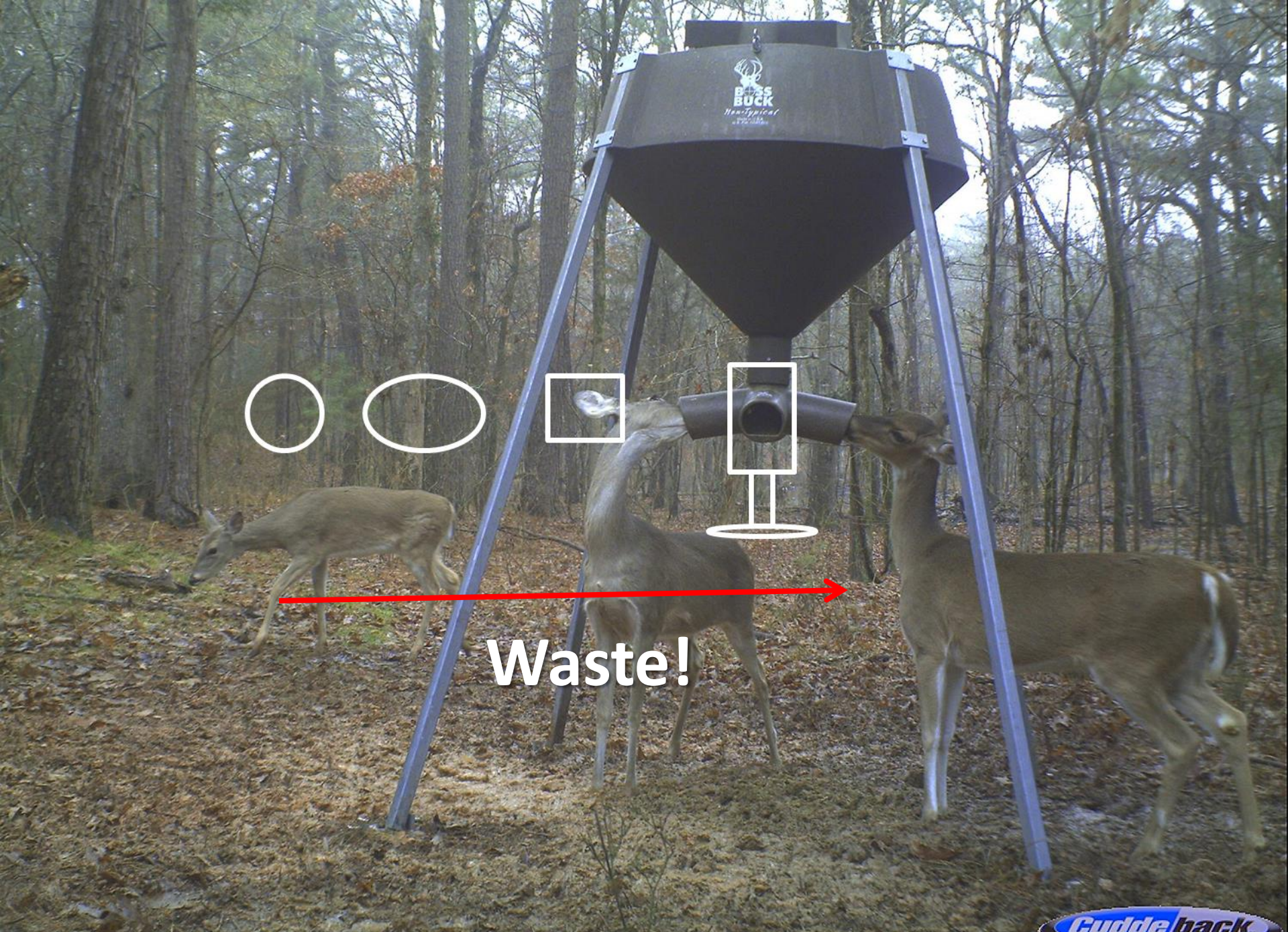


For many years, Dr. Deer™ had a standing offer to the industry that they would help design the Perfect Deer Feeder for free! Many companies wanted the Dr. Deer™ Certification, some even willing to pay for it, but no one wanted our help! Several years went by, until one day when Tom Boyer of Boss Buck™ wanted to take up the offer! The result was what we can prove is the “Perfect Deer Feeder!” So, let’s compare the Boss Buck™ to one of the oldest and most popular brands- All Seasons™.





FiberFeeder

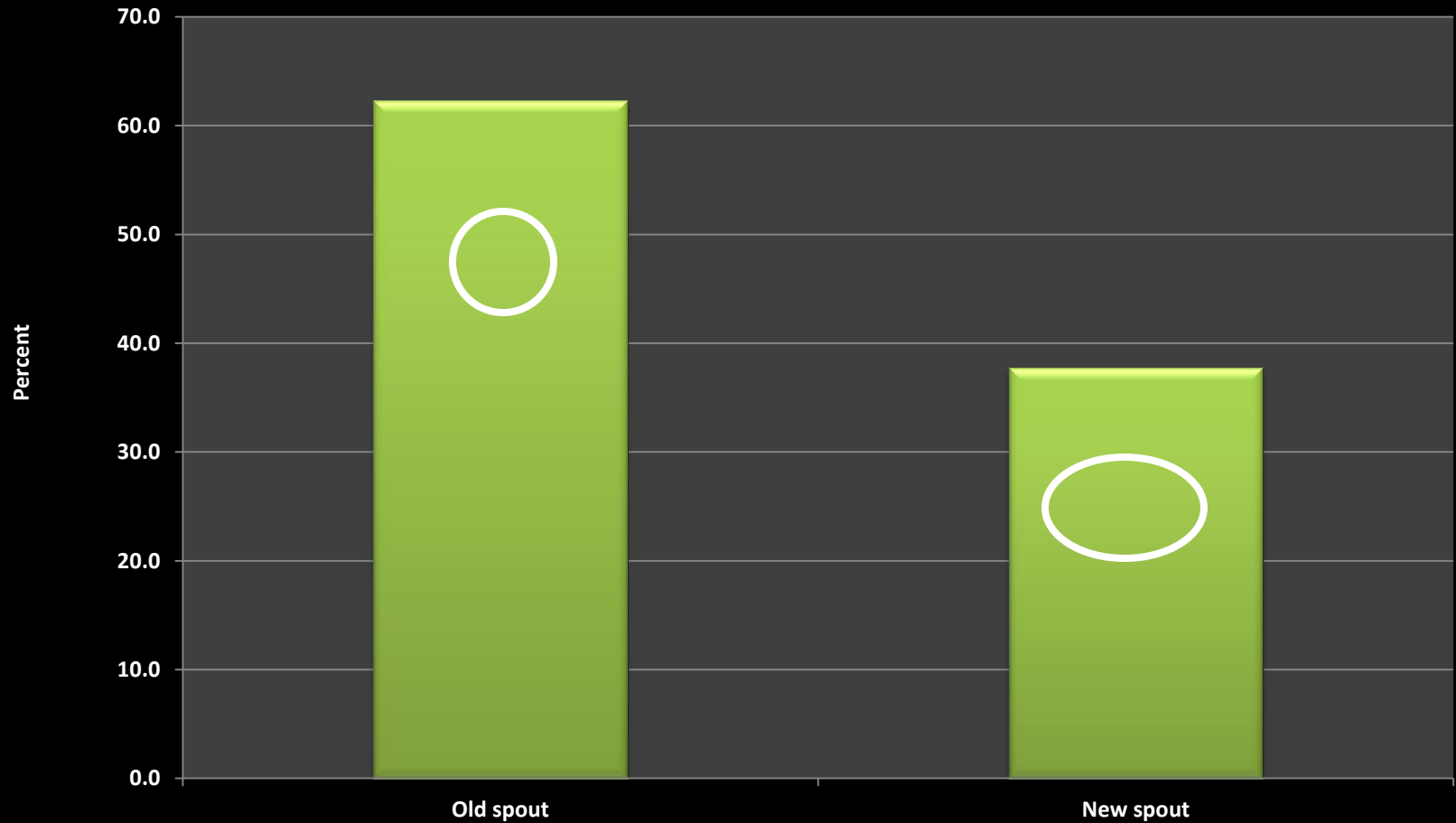


Waste!



All feeding observations

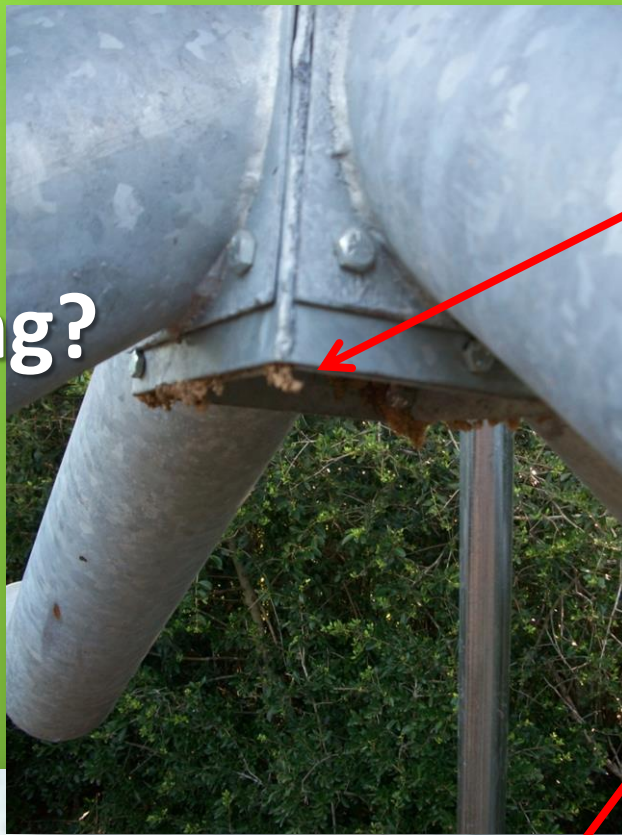
Just changing shape reduces use!



Antler Damage?



What's wrong?





Raccoons eat up to half of free-choice feed!

No antler damage!
Too high and too wide for raccoons!







We did it!

Let's compare the Boss Buck to a Popular Brand

Boss Buck™ Dr. Deer



All Season™



Structure?



- ✓ 350#-500# (Dr. Deer) models (\$333-\$625).
- ✓ Polypropylene
- ✓ Hatch lid is 3" deep
- ✓ Gravity 4-way feeding height 42".
- ✓ All galvanized hardware
- ✓ Inside spread of legs 40"
- ✓ Converts from gravity to spin feeder in minutes!!
- ✓ Feed tubes have 10° Angle
- ✓ Feed tubes have 1" overlap on top of each Port
- ✓ Feed ports are 8" long and 4" I.D.
- ✓ Each Port has a drain hole
- ✓ Feeder dimensions: 48x48x60
- ✓ Deluxe Anchoring Foot Pads
- ✓ 12 GA 84" Legs

- ✓ 300# Capacity (or larger)
- ✓ Galvanized construction to prevent corrosion
- ✓ Baffles in protein head allow for feed flow regulation
- ✓ 4" Feeder tubes
- ✓ Sight glass for easy view of feed level
- ✓ Comes with (4) 5'2" legs and drive pins for anchoring

Structure?



- ✓ Unique "air lock" lid with 3" overlap.
- ✓ Secure eyebolt latch.



- ✓ No "air lock" lid.
- ✓ Coiled wire spring latch.



Heat and moisture greatest enemy of feed!

Structure?



- ✓ Full funnel flow to feeder head, with no impediments!
- ✓ 100% of feed flows to feeder head.

- ✓ NO funnel for complete flow.
- ✓ Feed collects and ages on inside shelf!
- ✓ Note rust!

Structure?



- ✓ One piece design has no welds .



- ✓ Two piece design, with spot weld attachment.

Structure?



- ✓ One piece feeder head, with feed baffle.
- ✓ 4" round tubes.

- ✓ Galvanized sheet metal.
- ✓ 4" square tubes.

Social Conflicts?



Easier access by deer
without touching!

Bottom of Feeder Heads?



Flat surface collects and holds feed.
Note rust!



Even feeder head is funneled to assure
ALL feed is served!
No rust!

Moisture Management?



Bolt attachment through drop tube allows moisture to enter,
Note rust!



Internal baffle with encased bolts
eliminates moisture.
No rust!

Feed Baffle Design



Wing nut and metal slide.
Note rust!



Baffle controlled using outside bolt.
No rust!

Optional lockdown foot
pads increase safety and
withstand even cattle!



Heat Tests

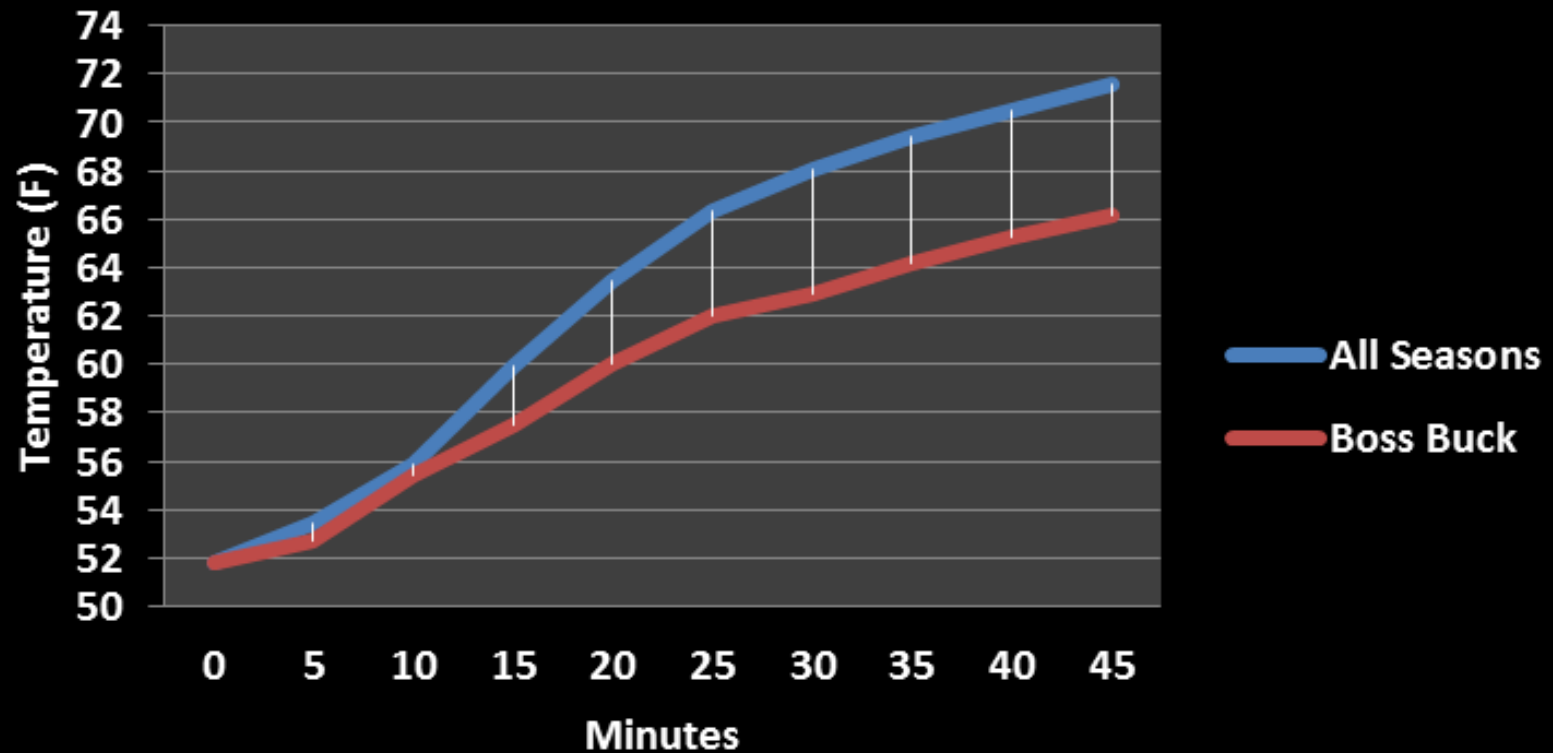
105.8° F Denatures Protein!



HEAT DEGRADES PROTEIN!

Imagine the difference at 100 °F ambient!

Heat Conduction Study, 2016





The Perfect Deer Feeder!



- ✓ Lifetime polypropylene material.
- ✓ NO RUST!
- ✓ Superior moisture and heat control.
- ✓ Designed with the behavior of deer in mind.
- ✓ Extremely raccoon and hog resistant!
- ✓ No surfaces or features to collect feed; no spoilage!
- ✓ Easy, one-person movement.
- ✓ Optional feeder lockdown foot pads!

“We enthusiastically endorse the Boss Buck Feeder; the Perfect deer feeder!”